



Hope Street, E14 0QG  
£2,300 Per Month

coopers  
OF LONDON EST. 1986

# Hope Street, E14

- Available Early April 2026
- Furnished
- 4th Floor
- Balcony with River View
- Concierge
- Residents Gym, Pool & Spa
- On Site Grocery Store
- Excellent Transport Links

Water views on offer from this fourth floor West facing one bedroom apartment in the modern London City Island development.

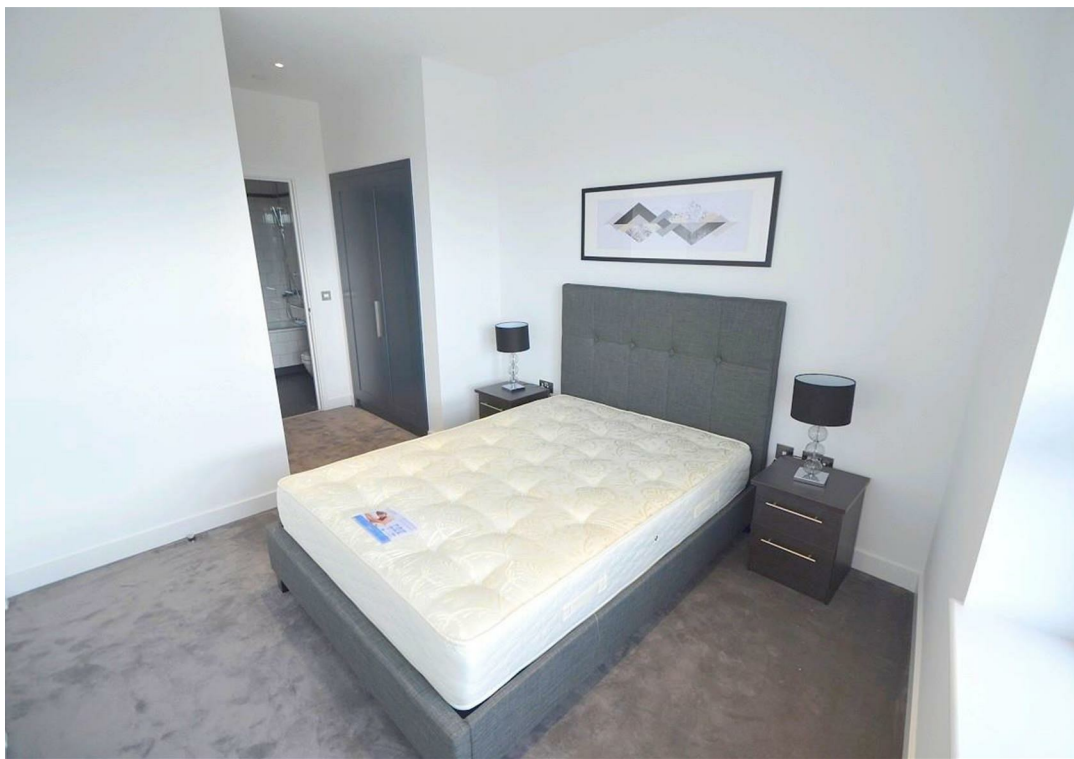
Benefiting from 577 square feet of internal space comprising of large open plan lounge incorporating bespoke kitchen, floor to ceiling windows with patio doors leading to private balcony offering direct views over River Lea and towards Canary Wharf. There is a good size double bedroom with walk in wardrobe and three piece suite bathroom suite.

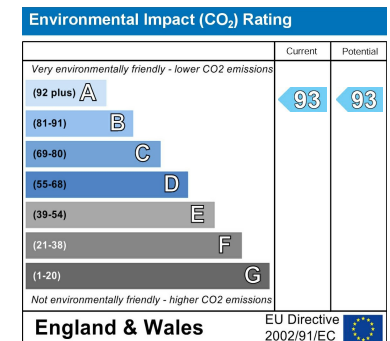
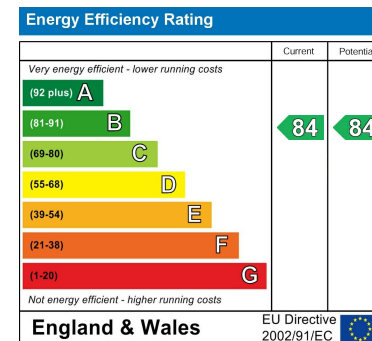
London City Island benefits from a new bridge connected to Canning Town station creating easy access to and from this vibrant new destination. There are excellent transport options to Canary Wharf, the City and City airport.

Built by Ballymore Homes this is a unique neighbourhood benefiting from beautiful designed landscaped gardens. Residents are members of the exclusive City Island Social Club with access to a range of private facilities including a clubhouse, 24 hour concierge, gym, spa, treatment rooms and a pool.

The property comes fully furnished.







## Viewing

Strictly by appointment with:  
Coopers of London , 22 Cleveland Street,  
Fitzrovia, London W1T 4JB  
[info@coopersoflondon.co.uk](mailto:info@coopersoflondon.co.uk)

**0207 580 9658**

These particulars, whilst believed to be accurate are set out as a general outline only for guidance and do not constitute any part of an offer or contract. Intending purchasers should not rely on them as statements or representation of fact, but must satisfy themselves by inspection or otherwise as to their accuracy. No person in this firms employment has the authority to make or give any representation or warranty in respect of the property.